



Rapid Test

Windows, Android & iOS

Quick User Guide

Table of Contents

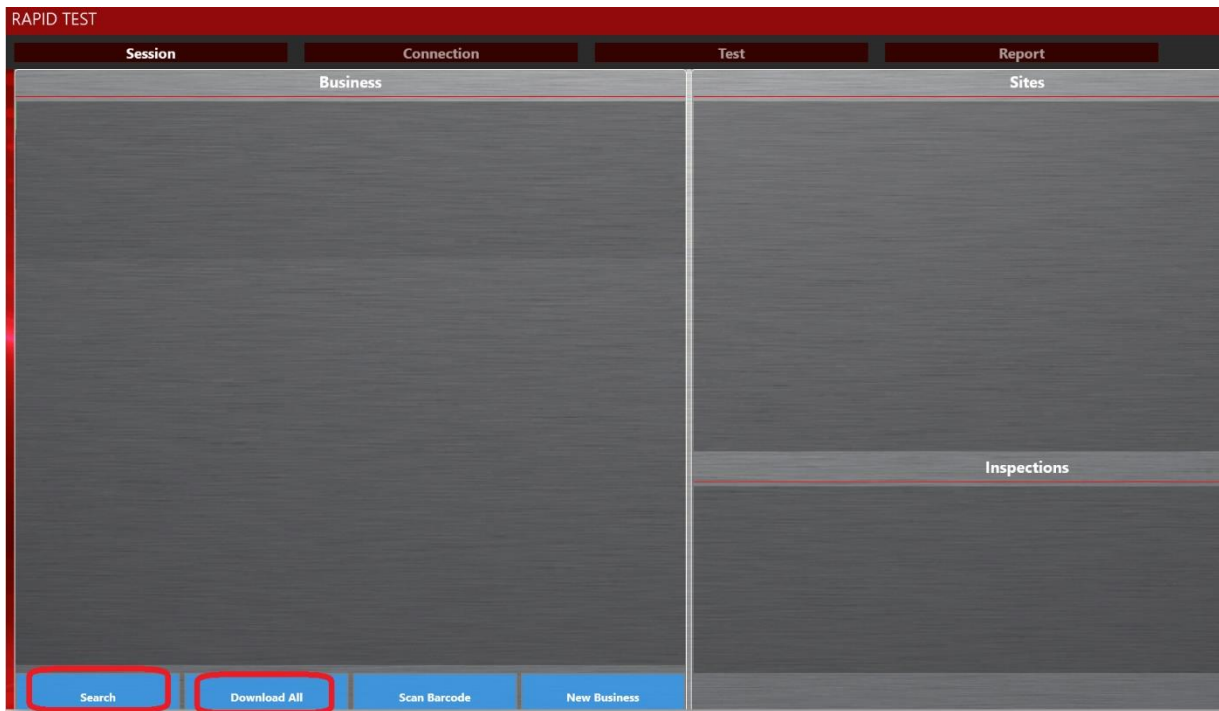
Start an Inspection	1
Normal Testing.....	3
Half Trip (Nuisance) and Fast (5x) Testing	4
Manual Fail	5
Test Results	5
Reporting	6
Upload to the Portal	6

Version Control

Version Number	Date	Changed by
1	26 th October 2016	Nicola Latter
2	7 th March 2018	Nicola Latter
3	23 rd March 2020	Wayne Peters

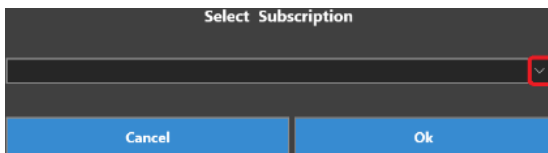
Start an Inspection

1. Connect the tablet to Wi-Fi or mobile network.
2. Log in to Rapid Test.
3. If the required business does not display, press **Download All** or **Search**.

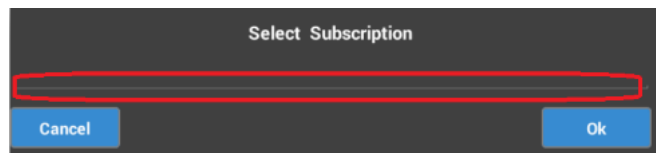


4. Use the dropdown arrow (Windows) or press on the line (Android / iOS) to select which portal subscription to use.

Windows:



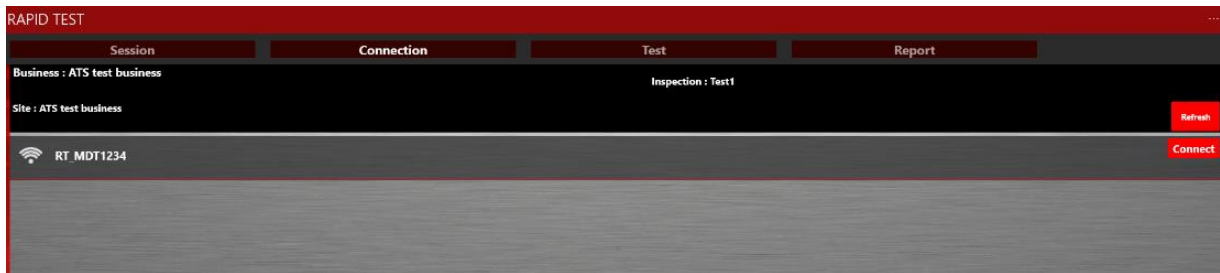
Android & iOS:



5. Select the required business and site.
6. Press **Add Insp** on the required site to create an inspection if one doesn't already exist.
7. Press **Start Test** on the inspection.

8. The 'Connection' screen opens. Select the Wi-Fi network prefixed with 'RT_'. Press **Connect**.

Note: If using iOS, connect to the 'RT_' Wi-Fi network in the tablet settings first.



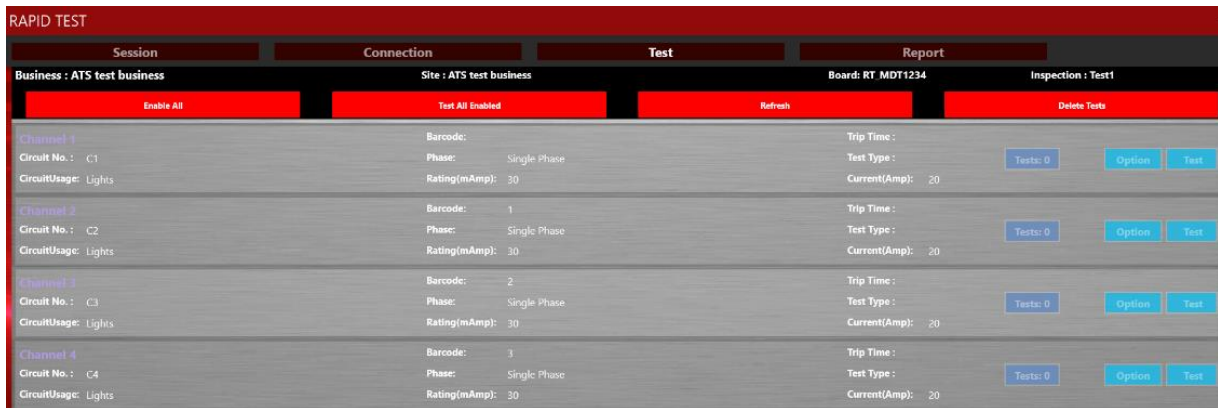
9. Enter the Wi-Fi password. The default password is 'rapidtest' (case sensitive).

10. The 'Test' screen opens displaying the switchboard details.

Ensure the RCDs are switched on before testing.

Normal Testing

1. On the 'Test' screen, press to select a channel for testing or press **Enable All** at the top of the screen to select all configured channels.



2. Press **Test All Enabled** at the top of the screen to start the test.
3. Tests are carried out in channel sequence order. The highlighted channel is the test in progress. Trip time, pass / fail status and number of tests are updated for each channel.

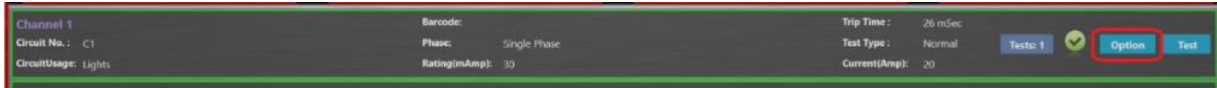


4. If the RCD is not switched on, a message will appear to choose whether to **Retry**, **Skip** or select as **Tagged off**.
5. To stop the test before it is finished, press **Cancel** at the bottom of the 'Test' screen.

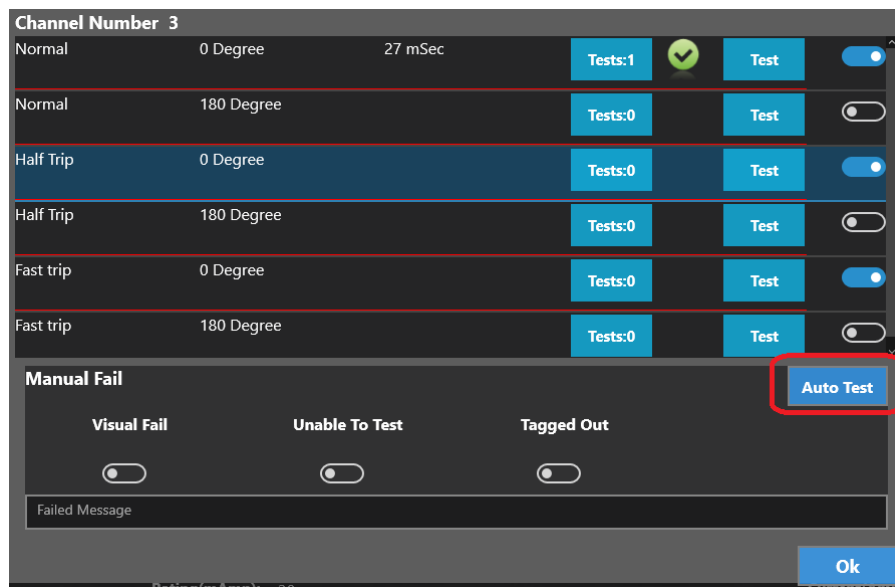
Reset the RCDs when testing is finished.

Half Trip (Nuisance) and Fast (5x) Testing

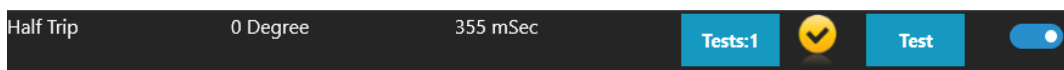
1. On the 'Test' screen, press **Option** on the required channel.



2. Use the toggle switches to select which tests to carry out and at which phase angle.



3. Press **Auto Test** to start all tests selected. Trip time and status are updated. The yellow tick indicates the test is complete. This is for information only and does not affect compliance status.

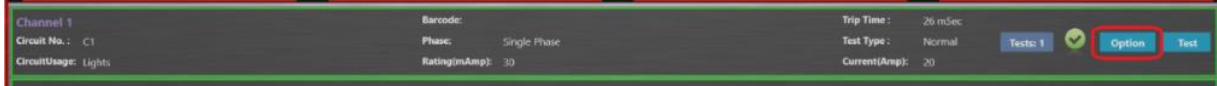


4. There is a prompt after each test to reset the RCD before starting the next test.

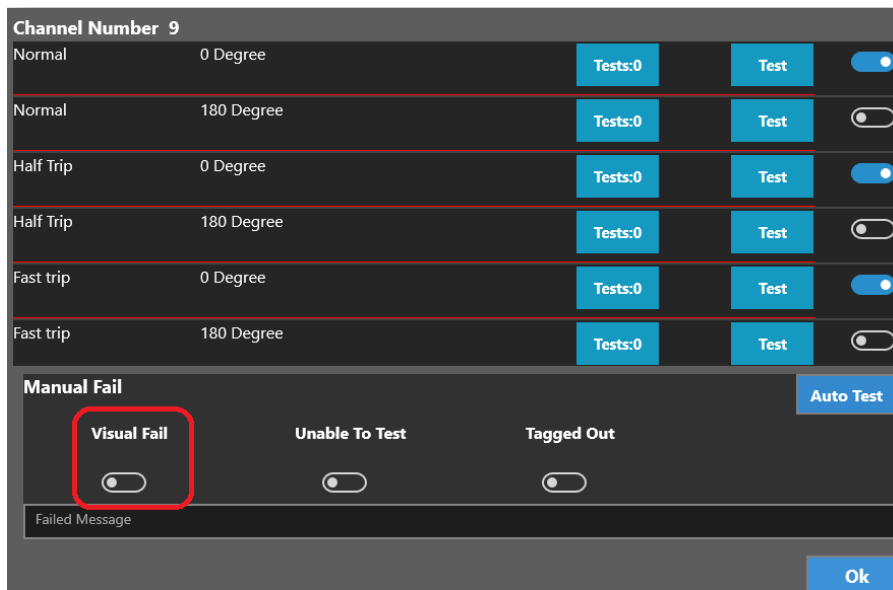
Reset the RCDs when testing is finished.

Manual Fail

1. On the 'Test' screen, press **Option** on the required channel.

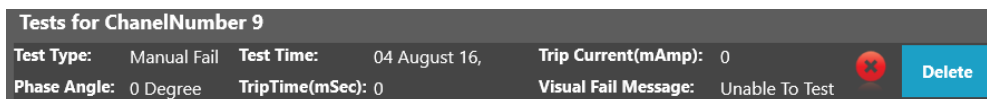
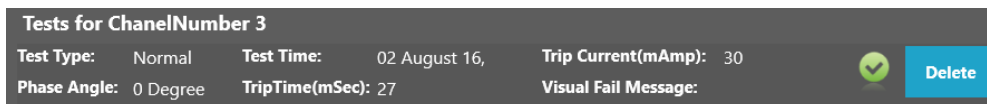


2. Use the **Visual Fail**, **Unable to Test** or **Tagged out** toggle switches and enter a failure reason in the comments box. The channel is marked as a fail.



Test Results

1. A green or red tick against the channel indicates the pass or fail status. Press **Tests** to see the detailed results.



2. If multiple tests have been done, all results will be displayed. The last test result will be the one assigned as the overall result.

Reporting

1. On the 'Report' screen, press on the required business and inspection.
2. Tested switchboards are displayed in the 'Switchboards' box.



3. Press on either **Complete PDF** report or **Failed PDF** to open the report.

Upload to the Portal

1. Ensure the tablet is connected to Wi-Fi / mobile network (not the switchboard Wi-Fi).
2. On the 'Report' screen, press **Upload** for the required inspection.



3. Test results are uploaded to the portal.
4. Refer to the Rapid Test Portal Manual for information on using the portal.

For further details on how to use the Rapid Test app or for troubleshooting, refer to the full Rapid Test user manuals which can be downloaded from the Rapid Test website

www.rapidtestsystems.com.au